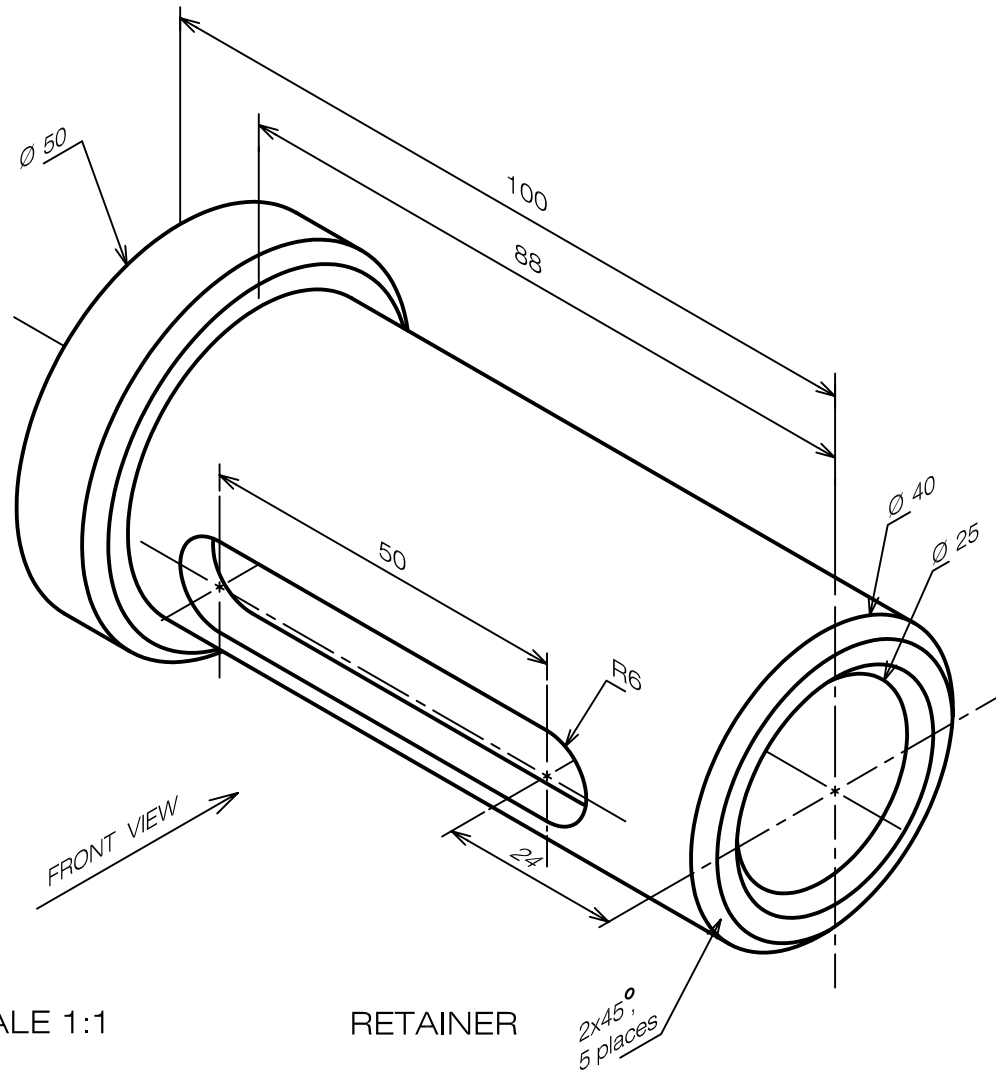


Draw front and right-side view of the following object with a completed dimensions. Draw in scale 1:1 on A4 sheet.

(Problem is adapted from "Fundamentals of Graphics Communication " by Bertoline)

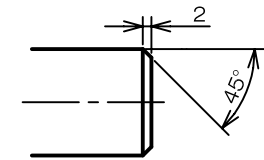
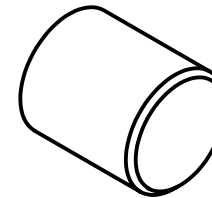


What can we learn from the drawing ?

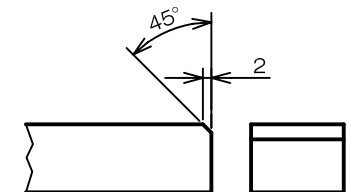
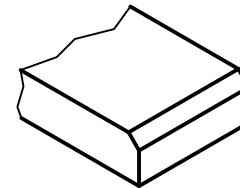
The note  $2 \times 45^\circ$  represent dimension of a chamfer.  
Chamfer is a process to make a sloping edge of the part.

1. External chamfer

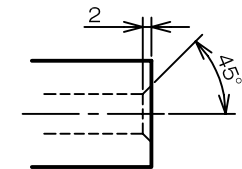
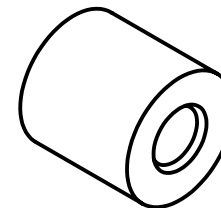
a) circular edge.



b) straight edge.



2. Internal chamfer



SCALE 1:1

RETAINER

$2 \times 45^\circ$ ,  
5 places